

Southern Alberta Round-Up Group

19th annual

Fleckvieh, Red & Black Simmental

Bull & Female Production Sale

Offering 74 head

47 Bulls including 19 two year olds

27 Bred & Open Heifers



Thursday, December 13, 2012, 1:00 p.m.
Southern Alberta Livestock Exchange, High River, AB

Sales Management Comments

Leading Off The Alberta Fall Sales Series!!!

Everyone takes pride in the way they host people at their sales but the Round-Up Group have always "set the bar" just a bit higher than most. Not only is the hospitality second to none but the ambiance of the Southern Alberta Livestock Exchange facility north of High River, Alberta only adds to it.

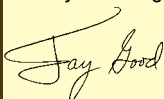
The bull sale section is well established at this event. A great following of repeat customers, including many of our "friends in black" have chosen the Round-Up as one, if not their only, stopping spot for bull shopping. This is always a great place to buy from a good assortment of yearling and two-year-old bulls. There has been a great commitment from the Round-Up Group to sell their best bulls through this event.

The female sale has very truthfully been overlooked for the quality that has been offered versus the dollars spent on them. The reality for anyone looking for quality papered Simmental females, your dollar has traditionally gone a little farther here than most other places. Not only can you find quality at a level as good as anywhere else, this is a chance to do business with some of the finest people in the Simmental business.

We look forward to seeing you at the Southern Alberta Simmental Round-Up, which kick starts an exciting series of back-to-back fall Simmental sales in Alberta.

Let us know if we can help you with your purchasing needs anywhere during this sale series.

See you at High River.



Transcon Livestock Corp.

For further information contact
any of the consignors or:



Consignors

Double J Ranches & W.H. Rothel 168, 169

Richard & James Jenkins
Box 8, Okotoks, AB T1S 1A4
James cell: 403 813-4490 Bill home: 403 255-5455
jjranches2010@hotmail.com

D. Maronda Simmentals 154 - 160

Darrell & Joyce Maronda
Box 44, Lomond, AB TOL 1G0
403 792-2242 Cell: 403 485-0455

MI Simmentals 129 - 142

Mike, Allison & Vanden Imler
Box 1597, Okotoks, AB T1S 1B5
Ph 403 938-1892 Cell: 403 888-1928
email: m.imler@platinum.ca

Okotoks Fleckvieh Group 143 - 153

Ted Shacklady, Brian Miller
66 Sheep River Cres., Okotoks, AB T1S 1T7
Ted: 403 938-4454 cell: 403 860-3183
Brian: 403 938-7980 cell: 403 540-3953
email: shacklady@shaw.ca

Parview Stock Farms 161 - 167

Brad Parker
Site 2, Box 9, RR 2, High River, AB T1V 1N2
403 652-1234 Fax 403 217-3934 Cell: 403 888-2183
email: bcparker@xplornet.com

Ricochet Stock Farms 101 - 128

Rick, Cheryl, Bailey & Morgan Blanchette
Box 1970, Enchant, AB T0K 0V0
Ph/Fax: 403 739-2504 Rick cell: 403 634-2824
email: rblanch@shockware.com

Vernon Properties Ltd. 170 - 174

Terry Vernon
Box 126, Millarville, AB TOL 1K0
403 931-2390 Cell: 403 606-7629
email: vernonmtv@aol.com

Remember to arrive early for the
Southern Alberta Round-Up Pre-sale Lunch

Cattle will be housed inside -- weather won't be a
factor to viewing the offering.

Southern Alberta Round Up Group Sale report

67 Lots averaged \$2897.00

High Sellers:

Lot 147 \$8600.00 - Nickel Farms, Bittern Lake, AB

Lot 118 \$7500.00 - D. Maronda Simmentals, Lomond, AB

Lot 146 \$6500.00 - Granum Colony Farming, Granum, AB

Lot 145 \$5500.00 - Exel Resources, Calgary, AB

Lot 128 \$5000.00 - Spruceburn Simmentals, Innisfail, AB

Lot 101 \$4600.00 - Spring Point Colony, Pincher Creek, AB

Lot 108 \$4600.00 - Springside Colony Farming, Duchess, AB

Lot 162 \$4600.00 - Dale & Jennie Wyatt, Vulcan, AB

Lot 164 \$4600.00 - Vossepoel Cattle Company, Tilley, AB

Lots on order:

1 Lot for Black Gold Simmentals, Lloydminster, SK \$1900.00

2 Lots for Don Charlton, Three Hills, AB \$8500.00

1 Lot for Hall Cattle Co, Cardston, AB \$4000.00

1 Lot for Wiedel Simmentals, Hebron, Nebraska, \$4000.00

Total on Order 5 Lots \$18,400.00



\$4600.00

VIRGINIAS RED MARCIANO FF
VIRGINIAS TACOMA 684050
 MI PAULINE 26P

RICOCHET RORY 523R
RICOCHET WALLIS 934W 712141
 RICOCHET NADIA 45N

BW: 101. Sept 3/11 Wt: 810. Dec 31/11 Wt: 1160.

IPU BRONSON 19K
 DFM JUNI 960J
 ANCHOR "T" SUPREME 39H
 MISS JKL JOSIE 3J
 DFM LEIF 126L
 BEL WENDY 32H
 MFL MAGNATE 18W
 RIVERBEND CARMEN 12C

101

FULLBLOOD MALE
RICOCHET YORICK 122Y
 764416 CLMS 122Y 26 January 2011

Full Fleckvieh. This bull is extremely deep bodied, big hipped and wide toplined. Huge feet and correct on his legs. Double goggled and red testicles on this gentle fella. He's as deep as he is long. Maybe the pick of the pen this year.

Ricochet Stock Farms



SAF 73H
VIRGINIA REDFORD FF T654893
 ANCHOR "T" BARBI 46K

DOUBLE BAR D RUDY 800L
RICOCHET RUBY RED 545R 657022
 JB CDN OCTAVIA 4017

BW: 100. Sept 3/11 Wt: 830. Dec 31/11 Wt: 1210.

SOLWAY ADONIS
 FANTA
 ANCHOR "T" TITANIC 22E
 ANCHOR "T" ILSE 10E
 ROOINIK
 TVP LYNELLE 701E
 ANCHOR "T" IMPACT 2H
 BEL RITTA 30M

102

FULLBLOOD MALE
RICOCHET YATES 133Y
 764420 CLMS 133Y 2 February 2011

Full Fleckvieh. Dark cherry red, large wrap around goggles, stylish, big hipped bull. Pigmented lip, clean sheathed. Out of a great moderate framed cow. Red testicles.

Ricochet Stock Farms

POLLED FULLBLOOD MALE

RICOCHET YOEMAN 17Y

P765095 CLMS 17Y 7 January 2011

103

EDN PUMA 45P
RICOCHET SCORPIO 601S P657026
RICH-MC SWEET NECTAR 18N

VIRGINIA REDFORD FF
RICOCHET WALLIS 93W 714362
RICOCHET PIPER 410P

EMIL
RICOCHET LEEZA 104L
BEL WESTERN UNION 2ND
BAR NONE BARBA 99
SAF 73H
ANCHOR "T" BARBI 46K
MCC GOLD 227K
MCC PEARL 64M

BW: 92. Sept 3/11 Wt: 885. Dec 31/11 Wt: 1269.

Full Fleckvieh. This bull is dark red, diamond faced, long bodied plus thick barreled. Polled. Quiet disposition.

Ricochet Stock Farms



\$2900.00

FULLBLOOD MALE

BEB BAILEYS YODA

748303 BEB 108Y 16 January 2011

104

MONET
RICOCHET SAMSON 607S 657027
DFM GYPSY 766G

GIST MR HIGH 2K
DFM 245M 588449
DFM KACY 46K

MOTO
NICHE
DFM EDWIN 51E
DFM ALBEES STORMY 327C
ARNOLD'S HIGH FIVE
ANCHOR D CHAMPAGNE LADY
MFL MAGNATE 18W
KLONDIKE JOY 52D

BW: 100. Sept 3/11 Wt: 820.

Full Fleckvieh. Dark red, wrap around goggles, smooth shouldered, long bodied bull. Red testicles.

Bailey Blanchette Simmentals



\$3500.00

FULLBLOOD MALE

RICOCHET YANCEY 111Y

764412 CLMS 111Y 18 January 2011

105

VIRGINIAS RED MARCIANO FF
RICOCHET TACOMA 684050
MI PAULINE 26P

SOLWAY ADONIS
RICOCHET WYOMING 918W T719730
DFM GYPSY 766G

IPU BRONSON 19K
DFM JUNI 960J
ANCHOR "T" SUPREME 39H
MISS JKL JOSIE 3J
SCOTTISH NEFF
BLYTHE
DFM EDWIN 51E
DFM ALBEES STORMY 327C

BW: 100. Sept 3/11 Wt: 830. Dec 31/11 Wt: 1295.

Full Fleckvieh. Full red faced except for diamond on forehead, this huge footed, thick legged bull has great body capacity and wide topline. Out of a really good young cow.

Ricochet Stock Farms



\$2500.00

FULLBLOOD MALE

RICOCHET YURI 117Y

764413 CLMS 117Y 25 January 2011

106

SAF 73H
VIRGINIA REDFORD FF T654893
ANCHOR "T" BARBI 46K

RICOCHET WESTDRUMS 36N
RICOCHET SAVANNAH 638S 673053
RICOCHET PIPPY 428P

SOLWAY ADONIS
FANTA
ANCHOR "T" TITANIC 22E
ANCHOR "T" ILSE 10E
WESTDRUMS ANDREW
DFM GYPSY 766G
DFM LEIF 126L
RICOCHET MADDIE 220M

BW: 88. Sept 3/11 Wt: 810. Dec 31/11 Wt: 1242.

Full Fleckvieh. Full red faced except for diamond on forehead, thick bodied, moderate framed, good length and hind quarter. Small headed and red testicles.

Ricochet Stock Farms



\$3000.00



107

FULLBLOOD MALE
RICOCHET YADIN 119Y

764414 CLMS 119Y 26 January 2011

SAF 73H
 VIRGINIA REDFORD FF T654893
 ANCHOR "T" BARBI 46K

RICOCHET PERCY 415P
 RICOCHET SERINA 636S 673052
 RICOCHET GEMINI 72G

SOLWAY ADONIS
 FANTA
 ANCHOR "T" TITANIC 22E
 ANCHOR "T" ILSE 10E
 TAKAR
 DFM 29H
 J ANCHOR BOOMER 1B
 RICOCHET CARMENS STAR 58E

BW: 102. Sept 3/11 Wt: 824. Dec 31/11 Wt: 1294.

Full Fleckvieh. Dark red, pigmented lip, one small goggle on this big hipped bull.

Ricochet Stock Farms



108

FULLBLOOD MALE
RICOCHET YONAH 121Y

764415 CLMS 121Y 26 January 2011

PORTER'S RESERVE 20R
 WNLP USHER 32U T699704
 RRV NATALIE

VIRGINIA REDFORD FF
 RICOCHET WHOOP! 908W 712133
 J ANCHOR JAHARI 28R

CROSSROADBENCHMARK 150M
 PRL KIRBIE 91K
 IPU BRONSON 19K
 BROCK MISS LATEEFA
 SAF 73H
 ANCHOR "T" BARBI 46K
 SHAWACRES JAHARI 50L
 J ANCHOR MS MNSTREAM 8M

BW: 86. Sept 3/11 Wt: 820. Dec 31/11 Wt: 1190.

Full Fleckvieh. Fantastic feet and legs on this bull. Solid red, wrap around goggles. Good natural thickness and length of body. Red testicles.

Ricochet Stock Farms

\$4600.00



109

FULLBLOOD MALE
RICOCHET YORKE 125Y

764417 CLMS 125Y 28 January 2011

SAF 73H
 VIRGINIA REDFORD FF T654893
 ANCHOR "T" BARBI 46K

RICOCHET PERCY 415P
 RICOCHET TARA 712T 676392
 RICOCHET RYLEE 527R

SOLWAY ADONIS
 FANTA
 ANCHOR "T" TITANIC 22E
 ANCHOR "T" ILSE 10E
 TAKAR
 DFM 29H
 DFM LEIF 126L
 RICOCHET JOLAINE 917J

BW: 96. Sept 3/11 Wt: 790. Dec 31/11 Wt: 1210.

Full Fleckvieh. Dark cherry red, one huge goggle, good depth of body and topline. Redford's good disposition. Red testicles.

Ricochet Stock Farms



110

FULLBLOOD MALE
RICOCHET YOUNG GUN 128Y

764418 CLMS 128Y 30 January 2011

PORTER'S RESERVE 20R
 WNLP USHER 32U T699704
 RRV NATALIE

DFM LEIF 126L
 RICOCHET RYLEE 527R 642254
 RICOCHET JOLAINE 917J

CROSSROADBENCHMARK 150M
 PRL KIRBIE 91K
 IPU BRONSON 19K
 BROCK MISS LATEEFA
 DDD BROADWAY G534
 RIDGES ZABRINA 72Z
 RICOCHET GARY 713G
 RICOCHET CARMENS STAR 58E

BW: 102. Sept 3/11 Wt: 796. Dec 31/11 Wt: 1190.

Full Fleckvieh. Have a close look at this dark cherry red fellow with wrap around goggles, great feet and legs and red testicles. Pigmented lips and out of a great cow. Gentle.

Ricochet Stock Farms

\$4000.00

FULLBLOOD MALE

RICOCHET YASSER 130Y

764419 CLMS 130Y 30 January 2011

111

SAF 73H
VIRGINIA REDFORD FF T654893
ANCHOR "T" BARBI 46K

RICOCHET JOSE 911J
RICOCHET MADDIE 220M 592669
DFM CRYSTAL 319C

SOLWAY ADONIS
FANTA
ANCHOR "T" TITANIC 22E
ANCHOR "T" ILSE 10E
RICOCHET GARY 713G
DFM 497D
MFL FOREMAN 36Z
BOLD ZORA 70Z

BW: 103. Sept 3/11 Wt: 780. Dec 31/11 Wt: 1165.

Full Fleckvieh. Solid red in color, small double goggled, thick barreled bull with sound legs and feet. Moderated framed, docile temperament and red testicles.

Ricochet Stock Farms



FULLBLOOD MALE

RICOCHET YAAR 135Y

764421 CLMS 135Y 6 February 2011

112

SAF 73H
VIRGINIA REDFORD FF T654893
ANCHOR "T" BARBI 46K

DFM LEIF 126L
RICOCHET RAYLEEN 529R 642255
RICOCHET MADDIE 220M

SOLWAY ADONIS
FANTA
ANCHOR "T" TITANIC 22E
ANCHOR "T" ILSE 10E
DDD BROADWAY G534
RIDGES ZABRINA 72Z
RICOCHET JOSE 911J
DFM CRYSTAL 319C

BW: 82. Sept 3/11 Wt: 784. Dec 31/11 Wt: 1180.

Full Fleckvieh. Extremely thick, red with white face except for small patch above one eye, this big barreled, wide topped bull comes from a strong cow family. Red testicles.

Ricochet Stock Farms



FULLBLOOD MALE

RICOCHET YOGI 137Y

764422 CLMS 137Y 7 February 2011

113

VIRGINIAS RED MARCIANO FF
VIRGINIAS TACOMA 684050
MI PAULINE 26P

RICOCHET RORY 523R
RICOCHET UNY 867U 708315
RICOCHET PERFECTA 42P

IPU BRONSON 19K
DFM JUNI 960J
ANCHOR "T" SUPREME 39H
MISS JKL JOSIE 3J
DFM LEIF 126L
BEL WENDY 32H
RICKARDSTOWN JUMBO
RICOCHET CARMENS STAR 58E

BW: 102. Sept 3/11 Wt: 816. Dec 31/11 Wt: 1312.

Full Fleckvieh. Double wrap around goggles, thick legs and great feet carry him around. Solid red in color, he has good thickness and super length combined. Red testicles.

Ricochet Stock Farms



FULLBLOOD MALE

RICOCHET YAMAL 146Y

764423 CLMS 146Y 23 February 2011

114

SAF 73H
VIRGINIA REDFORD FF T654893
ANCHOR "T" BARBI 46K

RICOCHET WESTDRUMS 36N
RICOCHET TRISTEN 747T 676402
RICOCHET MEAGAN 222M

SOLWAY ADONIS
FANTA
ANCHOR "T" TITANIC 22E
ANCHOR "T" ILSE 10E
WESTDRUMS ANDREW
DFM GYPSY 766G
RICOCHET JOSE 911J
DFM DAVINA 409D

BW: 78. Sept 3/11 Wt: 780. Dec 31/11 Wt: 1110.

Full Fleckvieh. Dark cherry red, wrap around goggles, red testicles, good length of body and capacity combined. Easy to work with.

Ricochet Stock Farms





\$2400.00

115

FULLBLOOD MALE
RICOCHET YAHOO 159Y

764424 CLMS 159Y 19 March 2011

VIRGINIAS RED MARCIANO FF
VIRGINIAS TACOMA 684050
 MI PAULINE 26P
 DFM LEIF 126L
RICOCHET PAYTON 414P 621710
 RICOCHET LORI 114L

IPU BRONSON 19K
 DFM JUNI 960J
 ANCHOR "T" SUPREME 39H
 MISS JKL JOSIE 3J
 DDD BROADWAY G534
 RIDGES ZABRINA 72Z
 RICOCHET JOSE 911J
 MS CLMS CARMEN 330C

BW: 96. Sept 3/11 Wt: 769. Dec 31/11 Wt: 1123.
 63/64 Fleckvieh. Long bodied, thick barreled, large wrap around goggles, very correct on his feet and legs. Solid red in color, good haircoat, and pigmented testicles.

Ricochet Stock Farms



116

FULLBLOOD MALE
RICOCHET YARDAN 161Y

764425 CLMS 161Y 21 March 2011

VIRGINIAS RED MARCIANO FF
VIRGINIAS TACOMA 684050
 MI PAULINE 26P
 HORN
RICOCHET PASCALE 412P 621708
 RICOCHET MIMI 202M

IPU BRONSON 19K
 DFM JUNI 960J
 ANCHOR "T" SUPREME 39H
 MISS JKL JOSIE 3J
 HALO
 BLUME
 ABR SIR ARNOLDS IMAGE
 DFM KODI 72K

BW: 86. Sept 3/11 Wt: 775. Dec 31/11 Wt: 1140.
 Full Fleckvieh. Stylish dark red, large wrap around goggles on this big hipped bull. Lots of stretch, structurally correct on his feet and legs. Red testicles.

Ricochet Stock Farms



\$3800.00

117

FULLBLOOD MALE
RICOCHET ZAC 24Z

766024 CLMS 24Z 3 January 2012

Full Fleckvieh. Out of one of our best cows who we purchased from Wa-Na-La-Pa, this red bull exhibits the qualities you'll appreciate. Tremendous legs and feet under him, double goggled, great hip and topline. Red testicles. Lower birth weight.

Ricochet Stock Farms

SAF 73H
VIRGINIA REDFORD FF T654893
 ANCHOR "T" BARBI 46K
 EAGLE-RIDGE LOBO 11L
WNLP MARABELLA 25U 696360
 VIRGINIA MS SHELBY

BW: 91. Sept 9/12 Wt: 780.

SOLWAY ADONIS
 FANTA
 ANCHOR "T" TITANIC 22E
 ANCHOR "T" ILSE 10E
 ROONIK
 JB HENDRIKA 28H
 IPU BRONSON 19K
 MFL ELBY 82E



\$7500.00

PORTER'S RESERVE 20R
WNLP USHER 32U T699704
 RRV NATALIE

VIRGINIA REDFORD FF
RICOCHET WHOOP! 908W 712133
 J ANCHOR JAHARI 28R

BW: 86. Sept 9/12 Wt: 790.

CROSSROAD BENCHMARK 150M
 PRL KIRBIE 91K
 IPU BRONSON 19K
 BROCK MISS LATEEFA
 SAF 73H
 ANCHOR "T" BARBI 46K
 SHAWACRES JAHARI 50L
 J ANCHOR MS MNSTREAM 8M

118

RICOCHET ZHEK 210Z

FULLBLOOD MALE

766027 CLMS 210Z 14 January 2012

Full Fleckvieh. This check mark faced, dark red bull is long bodied with natural thickness in hind quarter and nice topline. His dam was a 4-H project used by Bailey who did very well. Structurally correct on his feet and legs. Put a checkmark beside him on sale day.

Ricochet Stock Farms

FULLBLOOD MALE

RICOCHET ZARED 212Z

766028 CLMS 212Z 15 January 2012

119

SAF 73H
 VIRGINIA REDFORD FF T654893
 ANCHOR "T" BARBI 46K

RICOCHET WESTDRUMS 36N
RICOCHET RORI 525R 642252
 RICOCHET NATASHA 49N

BW: 100. Sept 9/12 Wt: 760.

Full Fleckvieh. This flashy calf has loads of hair, double goggled, big brown spot on top of his head. Moderate framed and eye appealing. Out of another favorite dam of ours. Red testicles.

Ricochet Stock Farms



\$2000.00

FULLBLOOD MALE

MPB ZIPPI 255Z

766022 MPB 255Z 13 February 2012

120

PORTER'S RESERVE 20R
WNLP USHER 32U T699704
 RRV NATALIE

DFM JEROME 915J
MPB NOELANI 33N 614510
 DFM KATIE 172K

BW: 102. Sept 9/12 Wt: 810.

15/16 Fleckvieh. Dark cherry red calf has two large goggles, red testicles, quiet as can be.

Morgan Blanchette Simmentals

CROSSROAD BENCHMARK 150M
 PRL KIRBIE 91K
 IPU BRONSON 19K
 BROCK MISS LATEEFA
 JB DOCTOR DUKE 442D
 MS PRL ANCHOR 021Y
 DFM 853H
 MISS DFM STORM'SAMANDA14A



\$3000.00



121

FULLBLOOD MALE
RICOCHET ZION 263Z

766030 CLMS 263Z 19 February 2012

SAF 73H
 VIRGINIA REDFORD FF T654893
 ANCHOR "T" BARBI 46K

RICOCHET JOSE 911J
 RICOCHET MICAH 223M 592675
 RICOCHET KANADIAN NEFF 1K

SOLWAY ADONIS
 FANTA
 ANCHOR "T" TITANIC 22E
 ANCHOR "T" ILSE 10E
 RICOCHET GARY 713G
 DFM 497D
 CANADIAN NEFF
 RICOCHET COONEE 50E

BW: 102. Sept 9/12 Wt: 835.

Full Fleckvieh. This bull goes back to our Canadian Neff favorite cow, CLMS 1K. Great maternal traits here. Longevity to boot. She's still going strong. He is moderate framed, solid red in color (not a trace of white), very docile disposition, big hipped calf born Feb 19. Thought of keeping to use ourselves but here he is...

Ricochet Stock Farms



122

BLACK POLLED 7/8 SIMMENTAL MALE
RICOCHET ZIGFRID 214Z

BPRS766032 CLMS 214Z 16 January 2012

CNS DREAM ON L186
 HTP SVF IN DEW TIME PTG671317
 HTP SVF HONEYDEW

WHEATLAND BULL 680S
 J ANCHOR MS 680S 53X BPRS746562
 J ANCHOR SIM/ANGUS 11S

NICHOLS BLK DESTINY G151
 CNS SHEEZA DREAM K107W
 GW LUCKY DICE 187H
 HC HONEYSUCKLE ROSE
 WHEATLAND BULL 131L
 WHEATLAND LADY 351N
 B/R NEW DESIGN 323-9150
 J ANCHOR JET BOMBER 64N

BW: 82. Sept 9/12 Wt: 690.

This is the first black bull we have ever offered for sale. We purchased a high selling bred at Murray Jacobson's dispersal sale and this is the result. He has a moderate frame, good feet and legs, has really been coming on strong. Low birth weight. Heifer bull possibly. Small headed.

Ricochet Stock Farms



123

FULLBLOOD FEMALE
RICOCHET ZABRINA 26Z

766025 CLMS 26Z 5 January 2012

SAF 73H
 VIRGINIA REDFORD FF T654893
 ANCHOR "T" BARBI 46K

RICOCHET WESTDRUMS 36N
 RICOCHET SAGE 620S 673049
 LAZY H HAYLEY 9H

BW: 96. Sept 9/12 Wt.: 740
 Open.

SOLWAY ADONIS
 FANTA
 ANCHOR "T" TITANIC 22E
 ANCHOR "T" ILSE 10E
 WESTDRUMS ANDREW
 DFM GYPSY 766G
 PRL PORTERHOUSE REGENT
 RHY FAITH 05F

Full Fleckvieh. This eye appealing dark red calf has a small white square on her head. Big hind quartered, long spined and wide topped, she has a great haircoat and is correct on her feet and legs. Out of a tremendous dam who consistently produces an exceptional calf every year.

Ricochet Stock Farms



\$3400.00

SAF 73H
VIRGINIA REDFORD FF T654893
 ANCHOR "T" BARBI 46K

 RICOCHET SAMSON 607S
RICOCHET WHITNEY 99W 712131
 RICOCHET TAKEISHA 723T

BW: 84. Sept 9/12 Wt: 720.
 Open.

SOLWAY ADONIS
 FANTA
 ANCHOR "T" TITANIC 22E
 ANCHOR "T" ILSE 10E
 MONET
 DFM GYPSY 766G
 RICOCHET WESTDRUMS 36N
 RICOCHET LILY 106L

124

FULLBLOOD FEMALE
RICOCHET ZANNA 27Z
 766026 CLMS 27Z 5 January 2012

Full Fleckvieh. This powerful, thick barreled red calf has two large wrap around goggles, wide topline and good length of body. Structurally sound legs and feet, super disposition and udder development.

Ricochet Stock Farms

FULLBLOOD FEMALE
RICOCHET ZANITA 241Z
 766029 CLMS 241Z 8 February 2012

125

SAF 73H
VIRGINIA REDFORD FF T654893
 ANCHOR "T" BARBI 46K

 SIM-ROC C&B WESTERN
RICOCHET NOEMIE 30N T603271
 MS CLMS FANCY'S CANDY 32C

BW: 80. Sept 9/12 Wt: 710.
 Open.

Full Fleckvieh. Plenty of performance here on this stylish dark red calf. She has a white heart on her face, deep ribbed and moderate framed. Excellent haircoat.

Ricochet Stock Farms



FULLBLOOD FEMALE
RICOCHET ZINA 270Z
 766031 CLMS 270Z 26 February 2012

126

PORTER'S RESERVE 20R
WNLP USHER 32U T699704
 RRV NATALIE

 VIRGINIA REDFORD FF
RICOCHET XANGER 81X 743458
 RICOCHET TIARRA 728T

BW: 91. Sept 9/12 Wt: 640.
 Open.

Full Fleckvieh. This fancy, heavily pigmented female will impress with her depth of body and length of spine. Double goggled, dark cherry red, nice haircoat. Out of a first calver who did a great job. Put her in your front pasture.

Ricochet Stock Farms



\$1900.00



\$1500.00

SAF 73H
VIRGINIA REDFORD FF T654893
 ANCHOR "T" BARBI 46K

RICOCHET PERCY 415P
BEB SAMMY 629S 673058
 BEB LILYMAE 30L

BW: 100. Sept 9/12 Wt: 640
 Open.

SOLWAY ADONIS
 FANTA
 ANCHOR "T" TITANIC 22E
 ANCHOR "T" ILSE 10E
 TAKAR
 DFM 29H
 SIR BLANCHETTE 6A
 DFM 7100G

127

FULLBLOOD FEMALE
BEB ZAHRA 252Z

766023 BEB 252Z 12 February 2012

15/16 Fleckvieh. She won't be a large cow but this dark red, double goggled female has a lot of capacity and will be the easy keeping type. Sweet disposition and strides ride out there on correct feet and legs.

Bailey Blanchette Simmentals



\$5000.00

SAF 73H
VIRGINIA REDFORD FF T654893
 ANCHOR "T" BARBI 46K

DFM RIDGE'S DAMON 447D
DFM 400P 632018
 DFM 256M

BW: 102. Sept 9/12 Wt: 725.
 Open.

SOLWAY ADONIS
 FANTA
 ANCHOR "T" TITANIC 22E
 ANCHOR "T" ILSE 10E
 SIR ARNOLD 809G
 CANADIAN RIDGE
 DFM KIRBY 40K
 DFM JOY 907J

128

FULLBLOOD FEMALE
MPB ZAYNE 206Z

766021 MPB 206Z 13 January 2012

Full Fleckvieh. Watch out for this heifer on sale day. You'll like her. She has all the credentials to make a powerful cow. Soggy, solid red, heart shape on her head, big hipped and super long bodied. Tremendous haircoat. Her dam, DFM 400P, never fails to produce a bell ringer. Two years ago she raised a high seller at this same sale. Awesome temperament.

Morgan Blanchette Simmentals



\$2300.00

GRP
129

FULLBLOOD MALE

MI-MR ZOOM

767227 MJIS 16Z 22 January 2012

BEL WESTERN UNION 5Z
BEL WESTERN UNION 2ND T351194
MOYGADDY JENNIFER

VIRGINIAS RED MARCIANO FF
VIRGINIA MS TABITHA 116T 693436
MS DDLH FAITH 9F

BW: 108. WNG: 770.

RICKARDSTOWN JUMBO
BEL HELGA 9TH
HAMLET
WENDY
IPU BRONSON 19K
DFM JUNI 960J
MFL BARNEY 57B
DDI MISS KESTREL 100X

Last year we had our main Fleckvieh herd bull get hurt at the beginning of breeding season. It left us in a bind until we could get him back into breeding. I decided to AI the cows while he was down. I think it may have turned out better than I could have asked. Western Union the second was a bull that I always admired and we got a handful of calves this year. Tabitha, 16Z's dam, is one of the best cows we have bought out of the great Virginia Ranch herd.

MI Simmentals



\$3000.00

GRP
130

FULLBLOOD MALE

MI MR ZORO

767229 MJIS 31Z 29 January 2012

BEL WESTERN UNION 5Z
BEL WESTERN UNION 2ND T351194
MOYGADDY JENNIFER

JB DOCTOR DUKE 442D
MI MS NELLY 1N T623032
MISS OKOFLECK 06D

BW: 110. WNG: 825.

RICKARDSTOWN JUMBO
BEL HELGA 9TH
HAMLET
WENDY
STEWARD
SAO C&B LADY 66R
ROGANT
SJFB LIRA

Another great calf from Western Union 2nd. This guy's mamma is sired by the famous JB Doctor Duke, and she has always been a real producer. She definitely followed suit again this year, as Zoro is no exception. This has been one of my favorite bull calves since birth and I think when you see him on sale day you will know why.

MI Simmentals



\$3500.00

TAKTIK
TAKAR 262976
KARMEN

ROGANT
MISS OKOFLECK 06D T320947
SJFB LIRA

TAFT
RIFFA
DIRIN
KATHI
ROGER
LORIS
MOLL 2ND
BEL HELGA 9TH

131

BW: 106. WNG: 825.

FULLBLOOD MALE
MI MR ZANTANA
T767539 MJIS 41Z 4 February 2012

MI Simmentals



Zeke and Zantana are full brothers both by embryo transplant. When we flushed our donor cow "Miss O" we dug deep into the tank and used some good old Takar. We were happy with matings of the similar genetics before and wanted to use it again. As you can see they didn't turn out exactly the same. I have really liked both of these bulls since birth and continue to believe that they will make excellent herd sires wherever they may go. Zantana did have a better recip cow, but after being weaned both bulls have held their own and come on very strong.

132

BW: 110. WNG: 780.

FULLBLOOD MALE
MI MR ZEKE
T767538 MJIS 49Z 12 February 2012

MI Simmentals



WHEATLAND BULL 468P
WHEATLAND RED HUMMER 608S PG666755
 WHEATLAND LADY 443P

LRS RED REALITY 33J
MI MS NANCY 4N G611990
 MS MI LANA 1L

BW: 98. WNG: 860.

HC POWER DRIVE 88H
 WHEATLAND LADY 902J
 WHEATLAND BULL 131L
 WHEATLAND LADY 228M
 PPSR COAL BLACK 65F
 LRS MS PREFD STOCK 715G
 MR SHAWACRES RED RAM 16J
 MS HIGHWOOD 26B

133

POLLED PUREBRED MALE
MI MR ZULU

PG767226 MJIS 9Z 16 January 2012

Solid red with a slight blaze down his face. Zulu is a very complete bull calf. His momma is one of my favorite red cows and she never seems to miss. Red Hummer is a red bull that needs no introduction to the world of red Simmental cattle.

MI Simmentals



\$3600.00

TNT GUNNER N208
OUTBACK RED AMBASSADOR PG719023
 ANCHOR D ZINA 29L

SHAWACRES MONSTER 26M
MS MI RAVEN 767211
 MISS MI PRINCESS MOLL 1G

BW: 99. WNG: 890.

RC STINGER 072K
 TNT MISS HONEY L9
 BBS ZIMA D55
 ANCHOR D MISS ARNIE 51G
 BHR ZULU G548E
 MISS SHAWACRES HALEY 34H
 SJFB MOLL 5W
 MISS PARKHILL HAME 339E

134

POLLED PUREBRED MALE
MI MR ZIPPY

PG767228 MJIS 23Z 27 January 2012

Zippy is out of my red herd sire, Ambassador, and a high percentage Fleckvieh cow. He is very deep red and very stout. He would work amazing on an Angus based cow herd if you were looking to add some dollars – oops, I meant pounds to your calf crop.

MI Simmentals



\$1800.00

EXODUS
DOUBLE BAR D EXODUS 104U P702831
 DORA LEE CELINE FF22P

SHAWACRES MONSTER 26M
MS MI RAVEN 767211
 MISS MI PRINCESS MOLL 1G

BW: 103. WNG: 790.

Bred Mar 25/12 to Virginia Kent 1X PT735870. Exposed Apr 27 to June 6/12 to MI Yuan 17Y P758638.

EISENHERZ
 ROBE
 ABR SIR ARNOLDS IMAGE
 DORA LEE CLAUDIA
 BHR ZULU G548E
 MISS SHAWACRES HALEY 34H
 SJFB MOLL 5W
 MISS PARKHILL HAME 339E

135

FULLBLOOD FEMALE

MS MI YOUNGLADY
 767217 MJIS 1Y 7 January 2011

The biggest bodied heifer in this year's offering for sure. This heifer has been one of the best since day one. Her mother is a very easy doing, low maintenance cow and I would expect this heifer to be no different. She is bred early to Virginia Kent, a bull that Vernon Properties and I own together.

MI Simmentals



\$4000.00

EXODUS
DOUBLE BAR D EXODUS 104U P702831
 DORA LEE CELINE FF22P

DOUBLE BAR D EVEREST 4R
DOUBLE BAR D LINDA 112U 702583
 DOUBLE BAR D LUCY 25N

BW: 97. WNG: 685.

Bred AI Apr 19/12 to Anchor T Supreme 39H 415168. Exposed Apr 27 to June 6/12 to MI Yuan 17Y P758638.

EISENHERZ
 ROBE
 ABR SIR ARNOLDS IMAGE
 DORA LEE CLAUDIA
 EMIL
 DOUBLE BAR D LYNN 89M
 DAMION STAR ELDANDI
 DOUBLE BAR D LUCY 9K

136

FULLBLOOD FEMALE

MS MI YANCYGIRL
 767218 MJIS 3Y 11 January 2011

Deep dark red and nice big goggle eyes, this heifer definitely catches your eye when you walk in the pen. The Exodus daughters that have been retained in the herd have worked well for us in the past couple of years. The Anchor "T" Supreme calf that she is carrying around should be fantastic.

MI Simmentals



\$2150.00

EXODUS
DOUBLE BAR D EXODUS 104U P702831
 DORA LEE CELINE FF22P

EAGLE-RIDGE MR MAIN 45K
TWIN ANCHOR 7 MAUVE 7M 589488
 SOUTH-HOLDEN EXTRO 52F6J

BW: 94. WNG: 745.

Bred Mar 25/12 to Virginia Kent 1X PT735870. Exposed Apr 27 to June 6/12 to MI Yuan 17Y P758638.

EISENHERZ
 ROBE
 ABR SIR ARNOLDS IMAGE
 DORA LEE CLAUDIA
 BAR NONE MAINSTREAM
 BAR NONE HILMA
 GRINALTA'S EXTRAORDINAIRE
 SOUTH-HOLDEN POL BOLD 52F

137

FULLBLOOD FEMALE

MS MI YOKO MOMMA

767221 MJIS 31Y 30 January 2011

Yoko Momma is a half sister to a bred heifer that we sold in last year's Round-Up to Darrell Maronda at Lomond. Darrell just commented to me the other day about how happy he was with her and the type of heifer she has turned into. This heifer's dam was a cow we bought out of the Twin Anchor 7 dispersal and both her heifers have been picked to sell in this sale.

MI Simmentals



\$2300.00

EXODUS
DOUBLE BAR D EXODUS 104U P702831
 DORA LEE CELINE FF22P

SHAWACRES MONSTER 26M
MS MI UNITY 767215
 MISS OKOFLECK LITTA 3L

BW: 90. WNG: 650.

Bred AI Apr 17/12 to Anchor "T" Supreme 39H 415168. Exposed Apr 27 to June 6/12 to MI Yuan 17Y P758638.

EISENHERZ
 ROBE
 ABR SIR ARNOLDS IMAGE
 DORA LEE CLAUDIA
 BHR ZULU G548E
 MISS SHAWACRES HALEY 34H
 TAKER
 BEL LITTA

138

FULLBLOOD FEMALE

MS MI YANNIE

767225 MJIS 38Y 3 February 2011

One of my favorite heifers in the sale pen. She is a solid, deep bodied, Fleck heifer. Her grand dam is a direct daughter of Takar and the great BEL Litta from Nick Berjian. Litta has been an outstanding cow and has done lots of great things for my Fleckvieh herd. Mating her to the Double Bar D Exodus bull has really done well, as this heifer will tell. Her Supreme baby inside will also add a little more to a heifer I'm already very excited about.

MI Simmentals



\$2500.00

DOUBLE BARD MAKE M PLED
DOUBLE BAR D MP 190U P702678
 DOUBLE BAR D ELISE 122R

BEL HADRIAN 2ND
MI MS NOREEN 113N T705035
 ANCHOR "T" ERIKA 68J

BW: 104. WNG: 785.

Exposed Apr 27 to June 3/12 to TTU Canyon (VIRS 279W) S742193. Observed bred Apr 29/12. Pregnancy tested Aug 31/12 pregnant to the observed breeding date.

GRINALTA'S GRIDIRON 403J
 GRINALTA'S CLASS ACT 11K
 DAMION STAR ELDANDI
 TE 16J
 BEL SIR ARNOLD 2ND
 BEL LYNN 55F
 ANCHOR "T" VISION 37G
 ANCHOR "T" LEBEN 57E

139

POLLED FULLBLOOD FEMALE
MS MI YANDEL 87Y

MJIS 87Y 30 January 2011

A very catchy 190U daughter. Marty Miller and I own a few registered cows together and she comes from one of our easy doing cows. 190U is a Make M Polled son that came from the great Double Bar D herd as well. He makes his home at the Millers, and they have had excellent luck with him. As an added bonus she is polled and bred to the walking sire at Virginia Ranches. She is also very quiet and should be an excellent asset in anyone's herd.

MI Simmentals



\$1700.00

TNT SURVIVOR K220
D BAR C MACHO 62M PG582270
 D BAR C JEN 958J

ANCHOR "T" SUPREME 39H
MI PRECIOUS 15P 624961
 MI MS MCBETH 7M

BW: 101. WNG: 775.

Bred AI Apr 7/12 to Wheatland Red Hummer 608S PG666755. Exposed Apr 25 to June 6/12 to CMS Sakic 101Y PTG752661.

TNT ROCKY H32
 TNT MISS MONTANA F135
 HF REMINGTON 102E
 SWS MS ALERT 30D
 BEL SIR ARNOLD 2ND
 ANCHOR "T" EDEL 45B
 ANCHOR "T" ROYAL 30K
 MISS OKOFLECK 06D

140

POLLED PUREBRED FEMALE

MS MI YORKIE

PG767222 MJIS 32Y 30 January 2011

A nice red baldy heifer to start off our reds in this sale. She is a direct daughter of Macho and a very easy doing Fleck cow. Her service to Red Hummer should have something exciting in store for her new owners.

MI Simmentals



\$2400.00

TNT GUNNER N208
OUTBACK RED AMBASSADOR PG719023
 ANCHOR D ZINA 29L

D BAR C MACHO 62M
MS MI SADIE PG767213
 MI MS MONICA 13M

BW: 90. WNG: 755.

Bred AI Apr 20/12 to Wheatland Red Hummer 608S PG666755. Exposed Apr 25 to June 6/12 to CMS Sakic101Y PTG752661.

RC STINGER 072K
 TNT MISS HONEY L9
 BBS ZIMA D55
 ANCHOR D MISS ARNIE 51G
 TNT SURVIVOR K220
 D BAR C JEN 958J
 ANCHOR "T" ROYAL 30K
 MS HIGHWOOD 8F

141

POLLED PUREBRED FEMALE
MS MI YASMINE
 PG767219 MJIS 19Y 24 January 2011

A very nice Ambassador heifer out of a Macho dam. This is a prime example of our red breeding program. Macho was the first bull that we used to start our reds. Since him we have been using Ambassador very heavy and are happy with the results.

MI Simmentals



\$2400.00

TNT GUNNER N208
OUTBACK RED AMBASSADOR PG719023
 ANCHOR D ZINA 29L

D BAR C MACHO 62M
MS MI RUBY PG767212
 GRS PRINCESS JALAPENO19K

BW: 102. WNG: 845.

Bred AI Apr 16/12 to Wheatland Red Hummer 608S PG666755. Exposed Apr 25 to June 6/12 to CMS Sakic101Y PTG752661.

RC STINGER 072K
 TNT MISS HONEY L9
 BBS ZIMA D55
 ANCHOR D MISS ARNIE 51G
 TNT SURVIVOR K220
 D BAR C JEN 958J
 STF JALAPENO
 GRS PRINCESS ANTON 20G

142

POLLED PUREBRED FEMALE
MS MI YOSIE
 PG767220 MJIS 26Y 26 January 2011

Another Ambassador out of a Macho. We have a lot of this repetitiveness in our herd as I said before because we find that it is working very well. She is solid red with a slight blaze on her face.

MI Simmentals



143

POLLED FULLBLOOD MALE
MJB ZENAS 1Z

P767295 MJB 1Z 5 January 2012

DOUBLE BARD MAKE M PLLED
DOUBLE BAR D MP 190U P702678
DOUBLE BAR D ELISE 122R

HEMR TEXAS 8T
MJB MISS XINARA 42X 740171
MJB RHONDA 35R

GRINALTA'S GRIDIRON 403J
GRINALTA'S CLASS ACT 11K
DAMION STAR ELDANDI
TE 16J
JARVIS MACTAVISH
BROCK NISHKA
MJB MR MARTY 4M
MISS MJB FROLINE 2F

BW: 82. 205 day: 710.

Full Fleckvieh. A thick muscular Double Bar D 190U son from a good HEHR Texas 8T heifer.

Okotoks Fleckvieh Group



144

FULLBLOOD MALE
TYSONS ZERO 18Z

767237 TMAA 18Z 27 January 2012

CHAMPS ROMANO
VIRGINIA PREMIERLEAGUE 735887
VIRGINIA'S MS WEST PATTY

HEMR TEXAS 8T
TYSONS WONDA 36W 707593
TYSON'S LYNDA 1L

SMITHBILT MOLSON 21M
CHAMPS PRICILLA
WESTDRUMS ANDREW
ANCHOR "T" BARBI 46K
JARVIS MACTAVISH
BROCK NISHKA
ARNOLD'S HIGH FIVE
MISS JKL JANET 14J

BW: 86. WNG: 730.

Full Fleckvieh. Dark red grandson of Champs Romano.

Okotoks Fleckvieh Group

\$3700.00



145

POLLED FULLBLOOD MALE
MJB ZALE 14Z

P766823 MJB 14Z 26 January 2012

DOUBLE BARD MAKE M PLLED
DOUBLE BAR D MP 190U P702678
DOUBLE BAR D ELISE 122R

ANCHOR "T" MISSION 38J
MJB MISS MARLA 12M 593144
MISS MJB FROMAGE 3F

GRINALTA'S GRIDIRON 403J
GRINALTA'S CLASS ACT 11K
DAMION STAR ELDANDI
TE 16J
ANCHOR "T" TITANIC 22E
ANCHOR "T" LOLITA 22Z
STERLING HERKULES
BEL LITTA

BW: 96. 205 day: 778.

Full Fleckvieh. A thick, deep, yellow bull. A 2010 son is working in the Granum Colony herd and a 2011 son is working in the River Bend Ranch herd in B.C.

Okotoks Fleckvieh Group

\$5500.00



146

FULLBLOOD MALE
JKL ZANE 20Z

766820 JKL 20Z 28 January 2012

MOLL 2ND
SJFB MOLL 5W 160059
SJFB EDDA

FLECKSTOCK KALIFORNIA 17K
BEL TRISHA 13T 686919
BEL GERDA 0304J

MOLL
LENI
SIR ARNOLD 809G
BEL HELGA 9TH
T2 BUD F22
RICHMOND HEAVEN 2H
BEL STEWARD 2ND
BEL NORA 304G

BW: 114. 205 day: 807.

Full Fleckvieh. An SJFB Moll 5W son. Calving ease plus performance.

Okotoks Fleckvieh Group

\$6500.00

FULLBLOOD MALE

MJB ZUNJ 22Z

766824 MJB 22Z 29 January 2012

147

CHAMPS ROMANO
VIRGINIA PREMIERLEAGUE 735887
VIRGINIA'S MS WEST PATTY

SHAWACRES JAHARI 50L
MJB TILLY 2T 692041
MISS MJB FROMAGE 3F

BW: 104. 205 day: 805.

Full Fleckvieh. A dark red, deep bodied son of our \$11,000 Virginia PremierLeague herdsire.

Okotoks Fleckvieh Group



\$8600.00

FULLBLOOD MALE

JKL ZAREK 39Z

766822 JKL 39Z 13 February 2012

148

CHAMPS ROMANO
VIRGINIA PREMIERLEAGUE 735887
VIRGINIA'S MS WEST PATTY

SMITHBILT LEVI 501L
JKL SELENA 20S 663368
GORMLEA MARCIE 360K

BW: 110. 205 day: 723.

Full Fleckvieh. Another dark red son of Virginia PremierLeague.

Okotoks Fleckvieh Group

Virginia PremierLeague



\$3500.00

FULLBLOOD MALE

MJB ZADOK 35Z

766825 MJB 35Z 10 February 2012

149

CHAMPS ROMANO
VIRGINIA PREMIERLEAGUE 735887
VIRGINIA'S MS WEST PATTY

GIDSCO APPOLLO 3F
MJB SERIA 9S 663370
MISS MJB FRANCINE 6F

BW: 104. 205 day: 807.

Full Fleckvieh. Son of Virginia PremierLeague. A potential herdsire.

Okotoks Fleckvieh Group



\$4250.00

FULLBLOOD MALE

OKOFLECK ZAKI 42Z

768228 OFEG 42Z 19 February 2012

150

BAR SP ROBOBULL 100J
MOOSE CREEK ROBOBULL 134U 697825
MOOSE-CREEK MALEAH 134M

BEL C&B WESTERN 2ND
OKOFLECK MISS MARISA 1M T593147
ANCHOR "T" ALDINE 55C

BW: 108. 205 day: 803.

Fullblood % Fleckvieh. Red goggle eyed Moose Creek Robobull son.

Okotoks Fleckvieh Group





\$2200.00

151 OKOFLECK MISS YAIRA 13Y
749854 OFEG 13Y 27 January 2011

FULLBLOOD FEMALE

DOUBLE BARD MAKE M P LLED
DOUBLE BAR D MP 190U P702678
DOUBLE BAR D ELISE 122R

BEL SIR ARNOLD 2ND
RU-BENS MYRA 116M T575752
RU-BENS GEM

GRINALTA'S GRIDIRON 403J
GRINALTA'S CLASS ACT 11K
DAMION STAR ELDANDI
TE 16J
SIR ARNOLD 809G
MONICA 48D
KLONDIKE METRO 3E
KLONDIKE BRENDA 44E

BW: 98. 205 day: 629.

Bred AI Apr 1/12 to Anchor D Imax 250Y PT753794. Exposed Apr 27 to June 3/12 to TTU Canyon (VIRS 279W) S742193. Pregnancy test Aug 31/12 estimate pregnant to AI date.

Full Fleckvieh. Red goggle eyed. A BEL Sir Arnold 2nd granddaughter.

Okotoks Fleckvieh Group



\$2100.00

152 JKL MISS YUMA 15Y
749865 JKL 15Y 28 January 2011

FULLBLOOD FEMALE

DOUBLE BARD MAKE M P LLED
DOUBLE BAR D MP 190U P702678
DOUBLE BAR D ELISE 122R

HEMR TEXAS 8T
JKL MISS EMERSON 22W 724145
MISS JKL KATHERINE 1K

GRINALTA'S GRIDIRON 403J
GRINALTA'S CLASS ACT 11K
DAMION STAR ELDANDI
TE 16J
JARVIS MACTAVISH
BROCK NISHKA
MRLN RODEN
MTV BOBBIE

BW: 90. 205 day: 597.

Bred AI Apr 10/12 to Anchor D Imax 250Y PT753794. Exposed Apr 27 to June 3/12 to TTU Canyon (VIRS 279W) S742193. Pregnancy test Aug 31/12 estimate pregnant to AI date.

High percentage Fleckvieh Fullblood. Stylish and feminine.

Okotoks Fleckvieh Group



153 JKL MISS YAMINAH 16Y
749866 JKL 16Y 28 January 2011

FULLBLOOD FEMALE

595905 JARVIS MACTAVISH
HEMR TEXAS 8T 684463
BROCK NISHKA

FLECKSTOCK KALIFORNIA 17K
BEL LENA 65S 660691
BEL LENI 2L

TRYON BOLDACIOUS
RICHMOND MISS MOSES 36G
DOUBLE BAR D MOHAVE 24L
RICHMONDMISSSHAREHOLDERGE
T2 BUD F22
RICHMOND HEAVEN 2H
MOLL 2ND
BEL BLUME 2C

BW: 100. 205 day: 617.

Bred A I Mar 31/12 to Anchor D Imax 250Y PT753794. Exposed Apr 27 to June 3/12 to TTU Canyon (VIRS 279W) S742193. Pregnancy test Aug 31/12 estimate pregnant to AI date.

Full Fleckvieh. An HEMR Texas 8T daughter with Moll 2nd in her pedigree. Bred early.

Okotoks Fleckvieh Group

Welcome to 2012 Round-Up Sale.

D. Maronda Simmentals

Darrell & Joyce Maronda

Box 44, Lomond, AB T0L 1G0
403 792-2242 Cell: 403 485-0455

I started doing the write ups on the bred heifers but they all came out the same. Our bred heifer offering consists of four solid red, low birth weight females, all of which have large double goggles and most have pigment down to their feet. All have been Ivomeced.

They are all bred to DFM 99X, who has a 93 lb birth weight and is out of IPU Bronson and Brock's Meesha and is an ET calf. There are a lot of big Fleckvieh names in his background, check it out. He is solid red with a white shield on his forehead, has a red scrotum and has lots of length.

The three bulls were used in our own program later in the season due to having four bulls going down. All have been Ivomeced.

FULLBLOOD MALE

DFM 13Y

761216 DFM 13Y 25 January 2011

IPU BRONSON 19K
DFM PERSONALITY 1P 621875
BROCK'S MEESHA

DFM SKIPP 11S
MAD URSULA 81U P707211
MAD SPICE 625S

BW: 108. WNG: 860.

DFM Personality is solid red, long and deep bodied bull with two large goggles and a red scrotum. He has been semen tested and Trich (Trichomonas foetus) tested negative.

Maronda Simmentals

154



\$3500.00

FULLBLOOD MALE

DFM 37Y

761221 DFM 37Y 24 March 2011

EDN PUMA 45P
RICOCHET SCORPIO 601S P657026
RICH-MC SWEET NECTAR 18N

DFM SKIPP 11S
DFM 848U 707664
DFM SARA 660S

BW: 91.

This bull is solid red with two goggles, a red scrotum and pigment on his lips. He is a deep bodied, smaller framed bull that should work on heifers. He has been semen tested and Trich tested negative.

Maronda Simmentals

155



PUREBRED MALE

DFM 26Y

G761218 DFM 26Y 10 March 2011

D BAR C MATADOR 39M
TWIN-CHIEF THOMAS 305T PG683779
TWIN-CHIEF ROBLIN 305R

WFL MR WESTWAY 28R
DFM THIA 703T PG689265
DFM REBECCA 527R

BW: 96. WNG: 675.

A solid red, smaller framed bull with lots of depth and thickness. He has been semen tested and Trich tested negative.

Maronda Simmentals

156



FULLBLOOD FEMALE

DFM LUCY 108Y

763980 DFM 108Y 5 January 2011

JNR'S POLLED CRACKERJACK
JNR CARBON P713825
JNR'S HOLLY'S 1ST

DFM TAM 1T
DFM 922W 725537
DFM JEWEL 902J

BW: 80. WNG: 710.

Exposed to DFM Meesha's Bronson 99X T749060 Apr 15 to Sept 24/12. Check out this attractive heifer's pedigree for well known Fleckvieh names.

Maronda Simmentals

157



\$1800.00



\$1750.00

158

FULLBLOOD FEMALE

DFM CANDY 136Y

763997 DFM 136Y 18 March 2011

JNR'S POLLED CRACKERJACK
JNR CARBON P713825
 JNR'S HOLLY'S 1ST

KLONDIKE FIRECRACKER420J
 REJG MYSTIC 1N
 KWA REDBENCH 20P
 JNR'S HOLLY
 DEEBRAN DENNY
 DFM 49P
 DOUBLE BAR D REGENT 131R
 SU JONI 3J

GIST POLLED DESTINY
DFM TATUM WYNNE 923W P713906
 GIST POLLED TATUM

BW: 88. WNG: 600.

Exposed to DFM Meesha's Bronson 99X T749060 Apr 15 to Sept 24/12.

This heifer has a blaze face and is horned but has many polled genetics in her pedigree.

Maronda Simmentals



\$1800.00

159

POLLED FULLBLOOD FEMALE

DFM CLARA 138Y

P763998 DFM 138Y 19 March 2011

JNR'S POLLED CRACKERJACK
JNR CARBON P713825
 JNR'S HOLLY'S 1ST

KLONDIKE FIRECRACKER420J
 REJG MYSTIC 1N
 KWA REDBENCH 20P
 JNR'S HOLLY
 SHAWACRES JAHARI 50L
 DFM EILEEN 507E
 SPRUCEBURN SUPREME 12P
 DFM NEDI 316N

DFM PRINCE 27P
DFM 964W 725572
 DFM SARA 660S

BW: 96. WNG: 583.

Exposed to DFM Meesha's Bronson 99X T749060 Apr 15 to Sept 24/12.

This is a smooth polled heifer out of JNR Carbon, a bull we bought at Fleckvieh Equation to use on heifers. He worked very well for two seasons. We lost him this past winter due to a broken leg.

Maronda Simmentals



\$3000.00

160

PUREBRED FEMALE

DFM ANN 114Y

G763985 DFM 114Y 24 January 2011

STAR PALM
SIR BLANCHETTE 6A 233862
 MS PRL ANCHOR 021Y

PASCHA
 GERTI
 SIR ARNOLD S4012
 MS PRL THEA 038T
 DAYTON'S POL NEUMANN
 ANCHOR D CHAMPAGNE LADY
 HSF GFI DAWSON L24
 MS PRL HAILIE 218H

GIST MR ROCK STAR 5R
MAD 823U G707214
 PRL PONDEROSA 374P

BW: 87. WNG: 700.

Exposed to DFM Meesha's Bronson 99X T749060 Apr 15 to Sept 24/12.

A very deep heifer that is the easy doing type.

Maronda Simmentals



\$4000.00

161

POLLED PUREBRED MALE

PARVIEW'S MR PRIMECUT 153Y

BWPS 153Y 9 December 2011

IPU T-BONE 13R
VIRGINIA POLLED PRIMECUT PG701495
 WFL RED DOLL 517H

R PLUS RED RIBEYE 1134L
 TNT MISS JAZZ J316
 BBS ZIMA D55
 PARKHILL RED DOLL 21F
 ER BIG SKY 545B
 BAR 15 MISS SP 117-31K
 LBR RED BEACON L405
 JJJS MS PREMIER 9C

BAR 15 COPPER 21M
AEDJ MS COPPER 130T PG693074
 AEDJ MS BEACON 83P

BW: 94. Sept 1 Wt: 870.

Here's a solid red, moderate birth weight bull going back to a Janzen cow, which we purchased at the inaugural National Trust Sale. This guy is long bodied with a deep middle and is very thick in the hind end.

Parview Stock Farms

POLLED PUREBRED MALE

PARVIEW'S MR PRIMECUT 155Y **162**

BWPS 155Y 11 December 2011

IPU T-BONE 13R
VIRGINIA POLLED PRIMECUT PG701495
WFL RED DOLL 517H

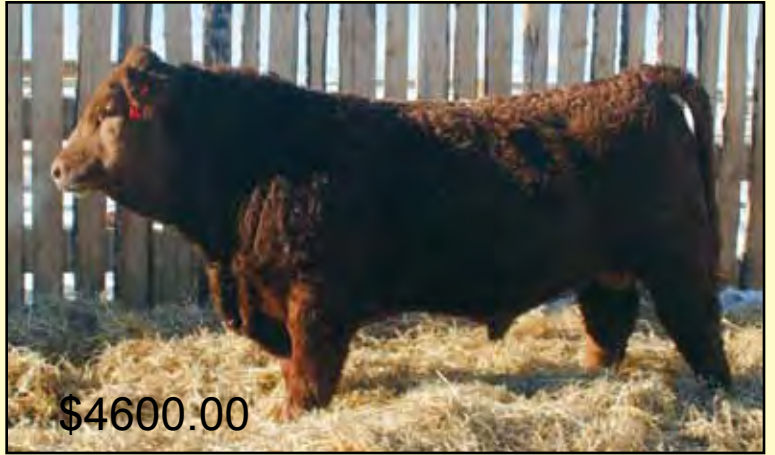
WFL COMMANDER 78R
TWIN CHIEF UNDERFIRE 21U PG700972
TWIN-CHIEF RASPBERRY 102R

R PLUS RED RIBEYE 1134L
TNT MISS JAZZ J316
BBS ZIMA D55
PARKHILL RED DOLL 21F
STF STARQUEST N114
WFL RED LICIOUS
TWIN-CHIEF NEXUS 56N
TWIN CHIEF MAXINE 124M

BW: 92. Sept 1 Wt: 880.

Parview's Mr Primecut 155Y is a bull that carries a ton of length and thickness, is showing a lot of performance and is very docile. These Primecut calves all calve very easy and then are very quick to get up.

Parview Stock Farms



\$4600.00

POLLED PUREBRED MALE

PARVIEW'S MR HEAVYWEIGHT 157Y **163**

BWPS 157Y 13 December 2011

IPU BLACK HEAVYWEIGHT 64S
YR BLK HEAVYWEIGHT 514X BPG729561
YR BLACK PRIMADONNA 514R

KLYBER
PARVIEW'S RED KYRA PG679822
BAR 15 BEEBA 34P

BF L113 HERO
PSR MISS PELTON M213
JDN CISCO'S PRIDE 10K
YR BLACK PRIMADONNA 32M
MON-BIJOU MAGNUM
WISP-WILL RONA
TNT BULLSEYE K104
BAR 15 BEEBA 83K

BW: 106. Sept 1 Wt: 1005.

Parview's Mr Heavyweight 157Y has been a standout since birth. He's a traditional colored, Fleck influenced purebred going back to Klyber. This guy carries more middle and thickness than any other bull I have seen at his age. He's had two brothers sell going to Wade Chester and Hansen Ranches. If you're looking to add some performance to an Angus based cow herd, then this is the guy for you.

Parview Stock Farms



\$2800.00

BLACK POLLED PUREBRED MALE

PARVIEW'S MR HEAVYWEIGHT 158Y **164**

BWPS 158Y 13 December 2011

IPU BLACK HEAVYWEIGHT 64S
YR BLK HEAVYWEIGHT 514X BPG729561
YR BLACK PRIMADONNA 514R

DOUBLE BAR D GUNSMOKE 216
PARVIEW'S MISS SWEETHEART PG733788
BLUCON 828U

BF L113 HERO
PSR MISS PELTON M213
JDN CISCO'S PRIDE 10K
YR BLACK PRIMADONNA 32M
MUIRHEAD'S GUNSMOKE 28P
IPU RED MS NOPHALT 121M
DIAMOND T BANK
BLUCON SWEETHEART

BW: 82. Sept 1 Wt: 820.

Parview's Mr Heavyweight 158Y is a low birth weight bull off a first calf heifer. All our Heavyweight calves came unassisted, showed great vigor and tremendous disposition. These Heavyweight calves all show well above average testicle size.

Parview Stock Farms



\$4600.00

BLACK POLLED PUREBRED MALE

PARVIEW'S MR HEAVYWEIGHT 160Y **165**

BWPS 160Y 17 December 2011

IPU BLACK HEAVYWEIGHT 64S
YR BLK HEAVYWEIGHT 514X BPG729561
YR BLACK PRIMADONNA 514R

VIRGINIA POLLED PRIMECUT
PARVIEW'S MISS SHASTA PG733791
TEMPLEHALL SHASTA 2S

BF L113 HERO
PSR MISS PELTON M213
JDN CISCO'S PRIDE 10K
YR BLACK PRIMADONNA 32M
IPU T-BONE 13R
WFL RED DOLL 517H
DFM MARCUS 14M
TEMPLEHALL SUMMER 15L

BW: 86. Sept 1 Wt: 800.

Here's another bull off of a first calf heifer, showing all the Heavyweight traits: deep bodied, great feet and huge testicles

Parview Stock Farms



\$4300.00



\$4000.00

166 **PARVIEW'S MR HEAVYWEIGHT 216Z**
 BLACK POLLED PUREBRED MALE
 BWPS 216Z 1 January 2012

IPU BLACK HEAVYWEIGHT 64S
 YR BLK HEAVYWEIGHT 514X BPG729561
 YR BLACK PRIMADONNA 514R
 NLC 64Y TOMCAT
 TRI-ADD JETBLACK 89A 28P PTG628342
 BAR 15 JET BLACK 89A

BF L113 HERO
 PSR MISS PELTON M213
 JDN CISCO'S PRIDE 10K
 YR BLACK PRIMADONNA 32M
 CHERITHBROOK MR ABE
 KS BM N713
 LANDRIDGE JET BLACK
 BAR 15 MISS U 110-83Y

BW: 86. Sept 1 Wt: 830.

Another great Heavyweight son. This guy's dam is a cow we purchased at the Bar 15 dispersal and she goes back to the great 89A cow. Again he carries all of the Heavyweight traits of great feet, low birth weight, tons of middle and huge testicles.

Parview Stock Farms



\$4100.00

167 **PARVIEW'S MR HELLER**
 FULLBLOOD MALE
 BWPS 161Y 18 December 2011

HELLER
 HEMR HELLER 5H 399757
 MRLN EMILY

HETO
 EVELINE
 MRLN GOLD
 MRLN ELISE
 GIDSCO APPOLLO 3F
 JERICO'S DEIRDRE 21D
 RICKARDSTOWN JUMBO
 MFL PETRA 95P

SMITHBILT MOLSON 21M
 SS RIKKI 25R FF 640069
 MFL ZELLE 61Z

BW: 105. Sept 1 Wt: 890.

Parview's Mr Heller is a Fleck bull loaded with outstanding genetics. He goes back to Heller, Molson, Jumbo and the great MFL Zelle 61Z cow. He's colored right and is showing lots of performance and a great disposition. He's a half-brother to the great SS Thor bull who walked the pastures at Wells' Crossing Cattle Company and JB Livestock.

Parview Stock Farms

Welcome to the 19th annual Southern Alberta Roundup Sale!

I would like to start off by welcoming Bill and his herd to Double J Ranches. For a young man as myself, starting out has had its ups and its downs, now being a great up. The genetics that come with this herd are tremendous and opens many new doors and opportunities for us. This year we have brought to the sale the best two females from our bred heifer group. Very strong, red, polled and deep females coming from DFM 60U who has produced some top of the line females for Bill over the past several years. To top these females off we have bred them to WHR Udaman 1X, a polled Full Fleckvieh bull who comes from Beech Bros. Udaman, an amazing Crackerjack son. The calves from these two should come out polled, deep and red. Both have had full vaccinations under our program and preg checked safe on Oct. 6/12 at 4.5 months pregnant. If you have any questions or wish to see their dams or sires feel free to call us and stop in anytime.

James Jenkins and Bill Rothel

Double J Ranches & W.H. Rothel

Richard & James Jenkins

Box 8, Okotoks, AB T1S 1A4

James cell: 403 813-4490 Bill home: 403 255-5455

jjranches2010@hotmail.com



\$1800.00

168 **WHR MS KAMECKO 112Y**
 POLLED PUREBRED FEMALE
 PG757898 WHR 112Y 17 January 2011

DFM SKIPP 11S
 DFM 60U P710569
 DFM SUNNY 642S

DFM MARCUS 14M
 JB MOULIN ROUGE 15M
 MTV GALT 9N
 DFM 438P
 TNT SURVIVOR K220
 D BAR C JEN 958J
 BH RIGHT TIME 520E
 S-PAW LUCKY LADY 13G

D BAR C MACHO 62M
 WHR MS ROXY 105R PG648861
 S-PAW KAMECKO 103K

BW: 102. 205 day: 610.

Exposed to WHR Udaman 1X P733405 Apr 20 to July 31/12. Preg tested Oct 6/12 - 4.5 mths.

Double J Ranch & W. H. Rothel

POLLED PUREBRED FEMALE

WHR MS RED BEAR 138Y

PG757889 WHR 138Y 6 February 2011

169

DFM SKIPP 11S
DFM 60U P710569
DFM SUNNY 642S

D BAR C MACHO 62M
WHR MS SUMMER 10W PG727000
WHR SUMMER 113S

DFM MARCUS 14M
JB MOULIN ROUGE 15M
MTV GALT 9N
DFM 438P
TNT SURVIVOR K220
D BAR C JEN 958J
MTV GARRET 5N
WHR MS JAYCEE 3P

BW: 108. 205 day: 625.

Exposed to WHR Udaman 1X P733405 Apr 20 to July 31/12. Preg tested Oct 6/12 - 4.5 mths.

Double J Ranch & W. H. Rothel



\$1500.00

FULLBLOOD MALE

MTV ABEL 5Z

768562 MTV 5Z 3 February 2012

170

DFM MARCUS 14M
MTV POL KOLBY 5S P679845
DFM 401P

SHAWACRES JAHARI 50L
MTV JANICE 7P 639163
MTV BELLE 1J

GRINALTA'S GRIDIRON 403J
DFM KATHLEEN 41K
DFM EDWIN 51E
DFM KARISE 56K
BHR DOORN G629E
MISS SHAWACRES HEIDI 1H
WELLS CARGO
MTV TONI 1F

BW: 98. WNG: 725.

Full Fleckvieh. A very well muscled calf out of a solid cherry red Jahari daughter of Bel Nora 308C.

Vernon Properties MTV Farms Ltd.

\$2300.00



FULLBLOOD FEMALE

MTV ROSA 1Y

757011 MTV 1Y 20 January 2011

171

DOUBLE BARD MAKE M PLLED
DOUBLE BAR D MP 190U P702678
DOUBLE BAR D ELISE 122R

HEMR TEXAS 8T
OKOFLECK MISS WILLIA 42W 724143
MISS OKOFLECK MISTY 7M

GRINALTA'S GRIDIRON 403J
GRINALTA'S CLASS ACT 11K
DAMION STAR ELDANDI
TE 16J
JARVIS MACTAVISH
BROCK NISHKA
ANCHOR "T" ROYAL 30K
MISS OKOFLECK KATLAN 2K

BW: 65. WNG: 750.

Exposed to Silver Lake Legacy Marc 3Y 748970 March 20 - July 1st, 2012. Preg tested for a late December early January calf.

Full Fleckvieh. We purchased her dam out of the 2010 Sale. She went on to have unassisted twin heifer calves. Rosa was weaned off her dam at 750 lbs, her sister was 725 lbs. She is bred early to our new scurred Full Fleckvieh herd sire Silver Lake Legacy 3Y.

Vernon Properties MTV Farms Ltd.

\$1800.00



Silver Lake Legacy Marc 3Y - service sire



BLCC 54W

Dam of Silver Lake Legacy Marc 3Y



172

FULLBLOOD FEMALE

MTV ROBIN 2Y

757012 MTV 2Y 20 January 2011

DOUBLE BARD MAKE M PLED
 DOUBLE BAR D MP 190U P702678
 DOUBLE BAR D ELISE 122R

HEMR TEXAS 8T
 OKOFLECK MISS WILLIA 42W 724143
 MISS OKOFLECK MISTY 7M

GRINALTA'S GRIDIRON 403J
 GRINALTA'S CLASS ACT 11K
 DAMION STAR ELDANDI
 TE 16J
 JARVIS MACTAVISH
 BROCK NISHKA
 ANCHOR "T" ROYAL 30K
 MISS OKOFLECK KATLAN 2K

BW: 60. WNG: 752.

Exposed to Silver Lake Legacy Marc 3Y 748970 March 20th - July 1st, 2012. Preg tested for a late December early January calf.

Full Fleckvieh. Robin is the second twin heifer out of Okofleck Miss Willia 42W. What a job she did on these unassisted twin heifers. Robin weighed 725 lbs at weaning. Miss Willia 42W also bred right back to calve February 7th 2012. She is bred early to our new scurred full fleckvieh herd sire Silver Lake Legacy 3Y.

Vernon Properties MTV Farms Ltd.

\$1800.00



173

FULLBLOOD FEMALE

MTV RIO 3Y

757013 MTV 3Y 6 February 2011

PORTERHOUSE JUSTIN 55J
 KOP AGASSIZ 31S P660047
 KOP MS FREIGHTLINER 27N

MTV POL KOLBY 5S
 MTV MOODIE 8W 722597
 MTV MAPLE 30T

PRL PORTERHOUSE REGENT
 SIM-ROC ALANA
 SMITHBILT FREIGHTLINER91J
 KOP KARLA 19K
 DFM MARCUS 14M
 DFM 401P
 SALMON ARM ROOIBOS 12N
 MTV NORMA JEAN

BW: 85. WNG: 750.

Exposed to Silver Lake Legacy Marc 3Y 748970 March 20th - July 1st, 2012. Preg tested for a late December early January calf.

Full Fleckvieh. Rio is a very feminine, well marked heifer. Bred early to Silver Lake Legacy 3Y.

Vernon Properties MTV Farms Ltd.

\$3800.00



174

FULLBLOOD FEMALE

MTV RAYELLE 16Y

757018 MTV 16Y 7 April 2011

DFM MARCUS 14M
 MTV POL KOLBY 5S P679845
 DFM 401P

SALMON ARM ROOIBOS 12N
 MTV MABLE 12T 685074
 BEL NORA 308C

GRINALTA'S GRIDIRON 403J
 DFM KATHLEEN 41K
 DFM EDWIN 51E
 DFM KARISE 56K
 ROONIK
 SALMON ARM MANZA 7L
 BRITTAS STORM
 BEL OLIVIA

BW: 90. WNG: 750.

Exposed to Silver Lake Legacy Marc 3Y 748970 March 20th - July 1st, 2012. Preg tested for a late December early January calf.

Full Fleckvieh. Rayelle is an early April heifer with lots of pigment and performance going back to the great Bel Nora on her dam's side.

Vernon Properties MTV Farms Ltd.